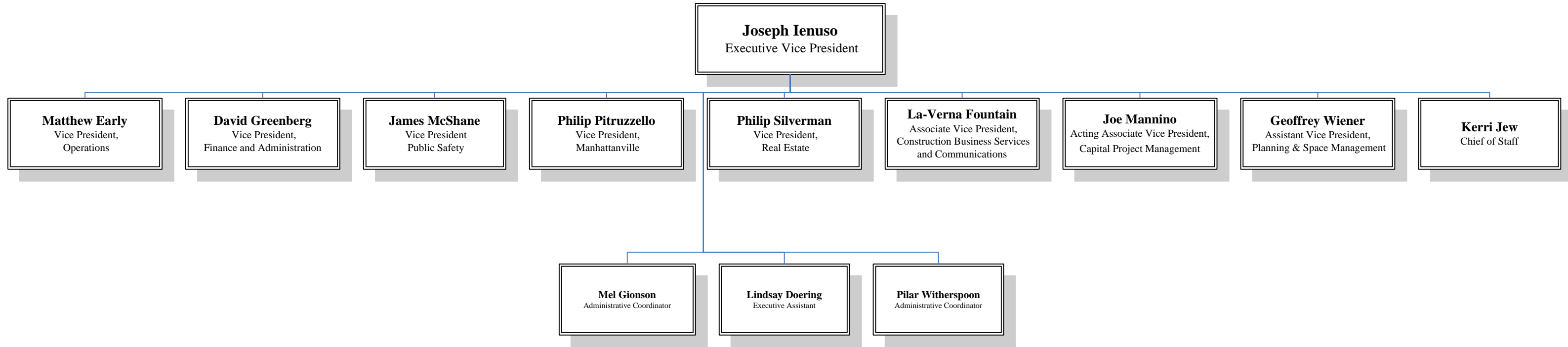
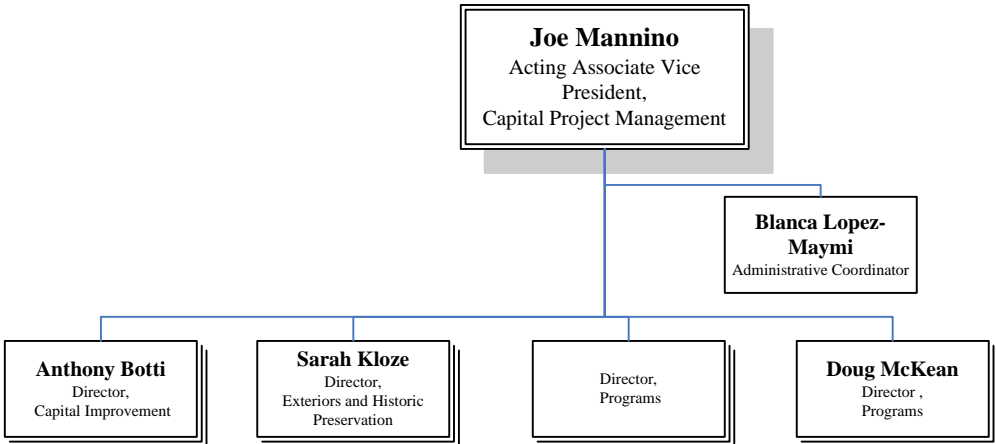


# Columbia University Facilities

## Executive Staff



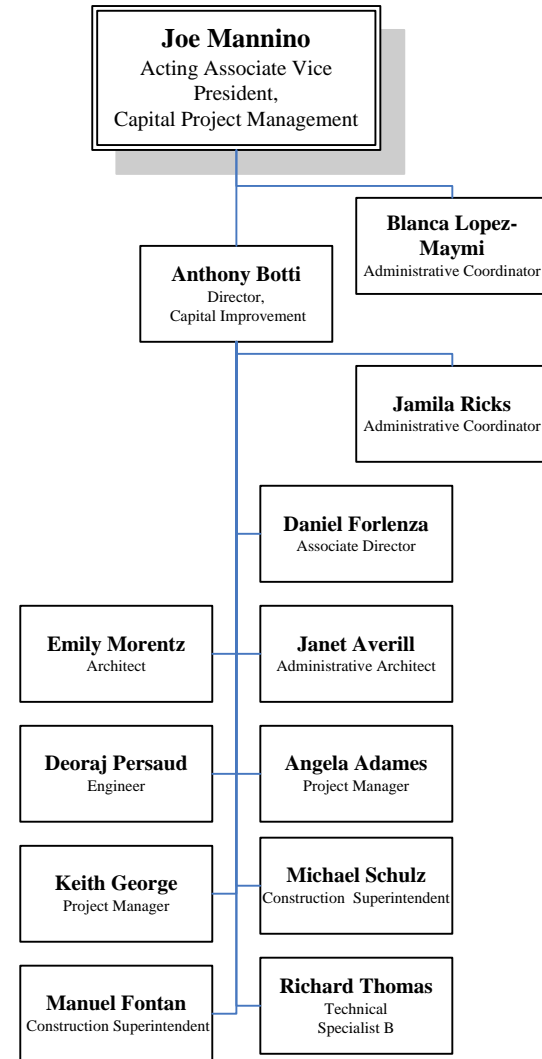
### Capital Project Management Senior Staff



[Back To Executive Staff](#)

Full Capital Project Management Org Chart

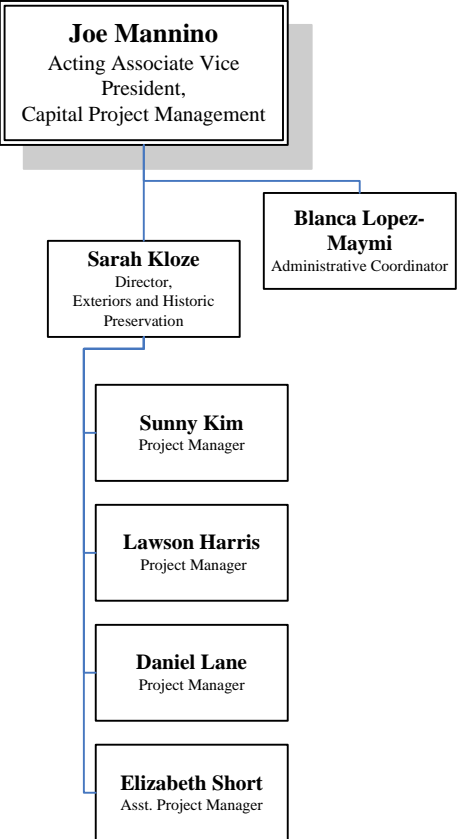
### C.P.M., Capital Improvement



[Back To Executive Staff](#)

[Back To Capital Project Management Senior Staff](#)

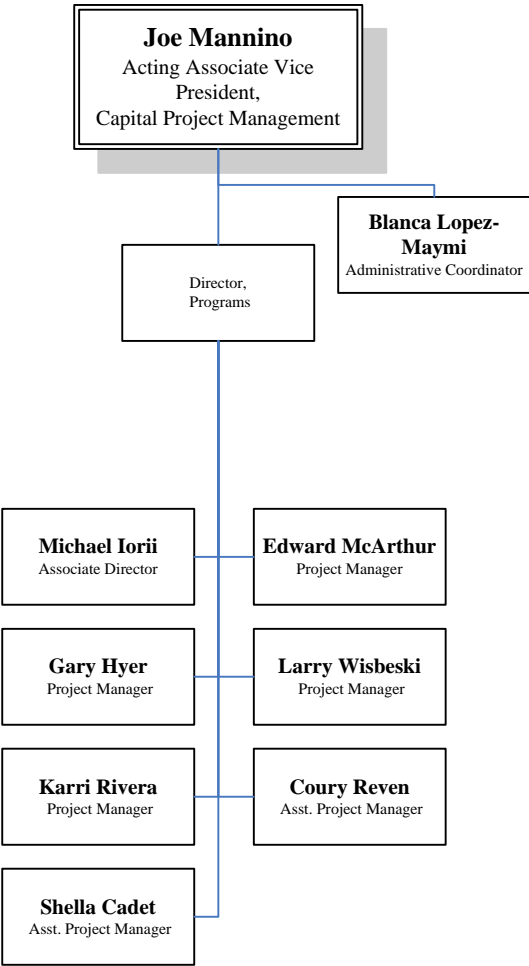
### C.P.M., Exteriors and Historic Preservation



[Back To Executive Staff](#)

[Back To Capital Project Management Senior Staff](#)

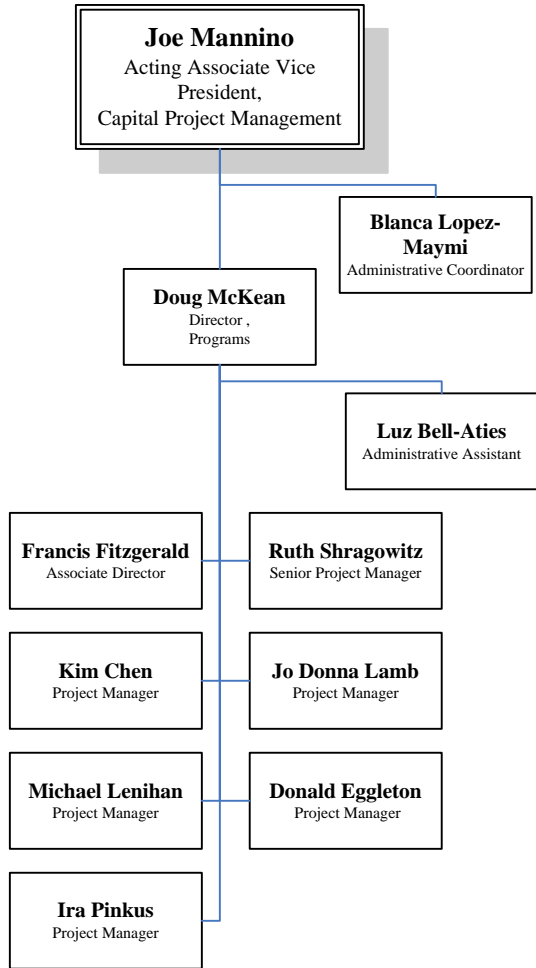
### C.P.M., Programs



Back To Executive Staff

Back To Capital Project Management Senior Staff

### C.P.M., Programs



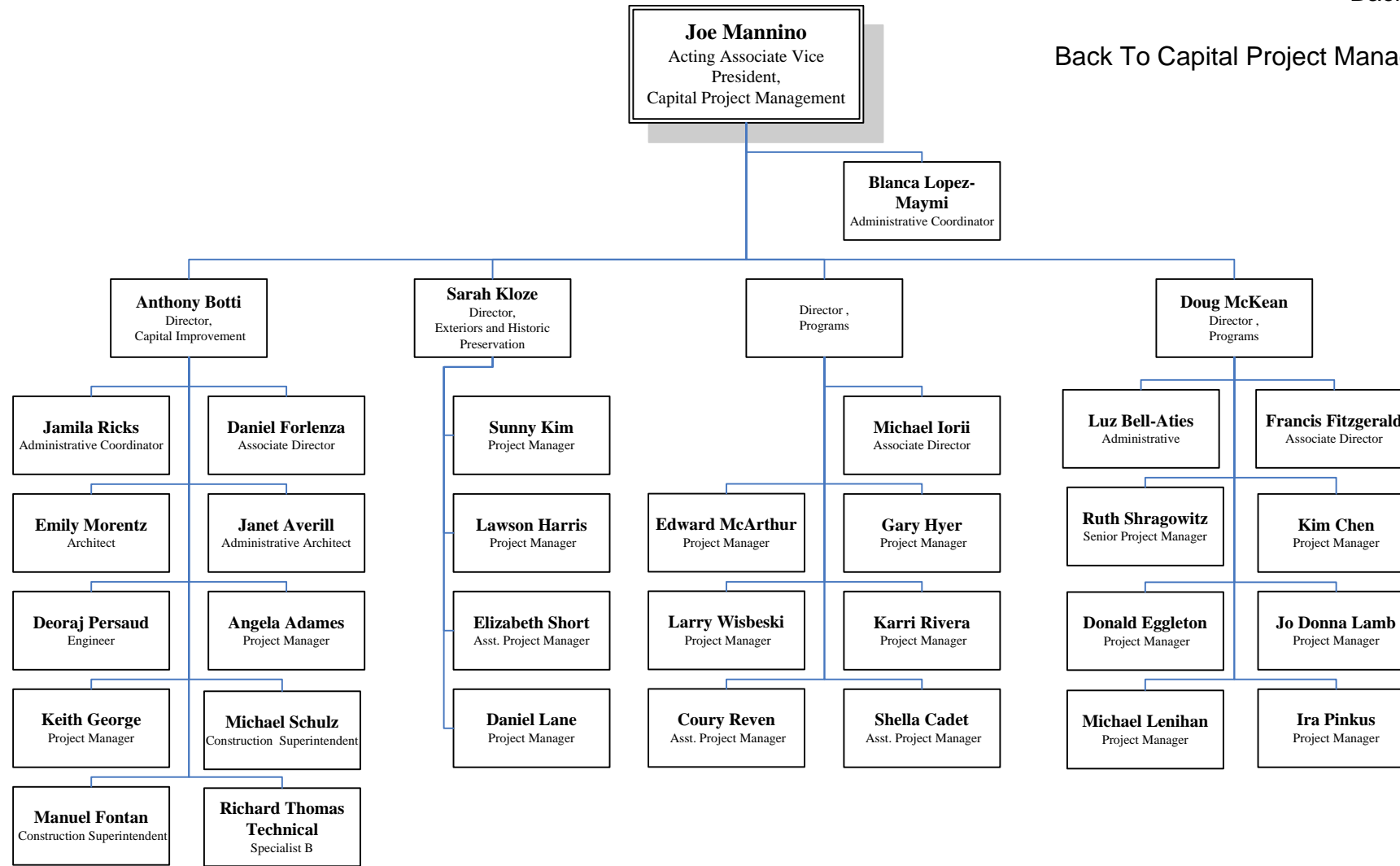
[Back To Executive Staff](#)

[Back To Capital Project Management Senior Staff](#)

### Capital Project Management

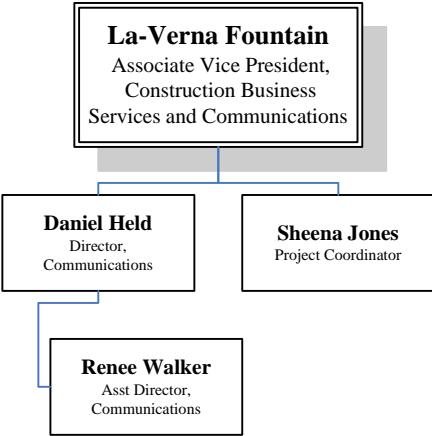
[Back To Executive Staff](#)

[Back To Capital Project Management Senior Staff](#)

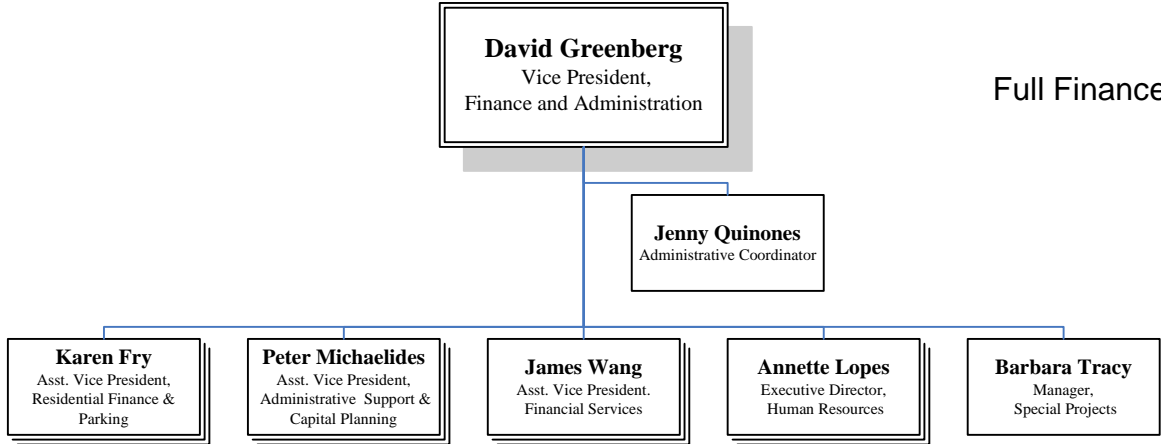


### Construction Business Services and Communications

[Back To Executive Staff](#)



### Finance and Administration Senior Staff



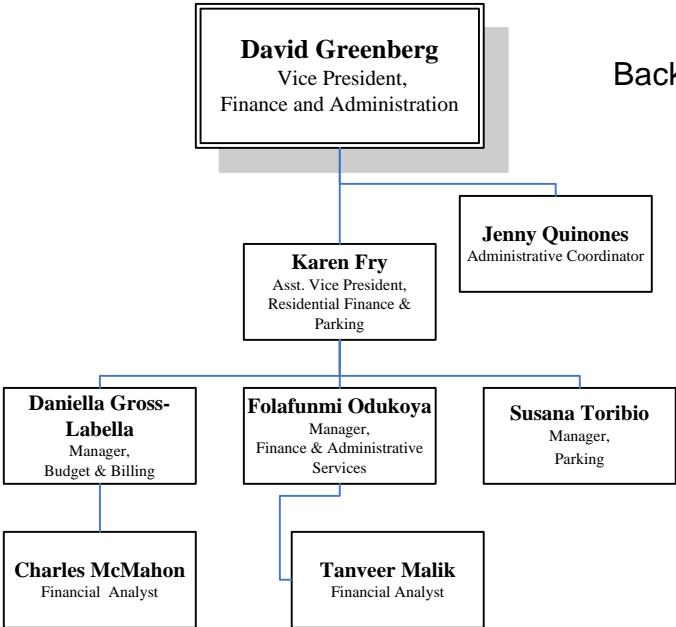
[Back To Executive Staff](#)

Full Finance and Administration Org Chart

### F&A, Residential Finance & Parking

[Back To Executive Staff](#)

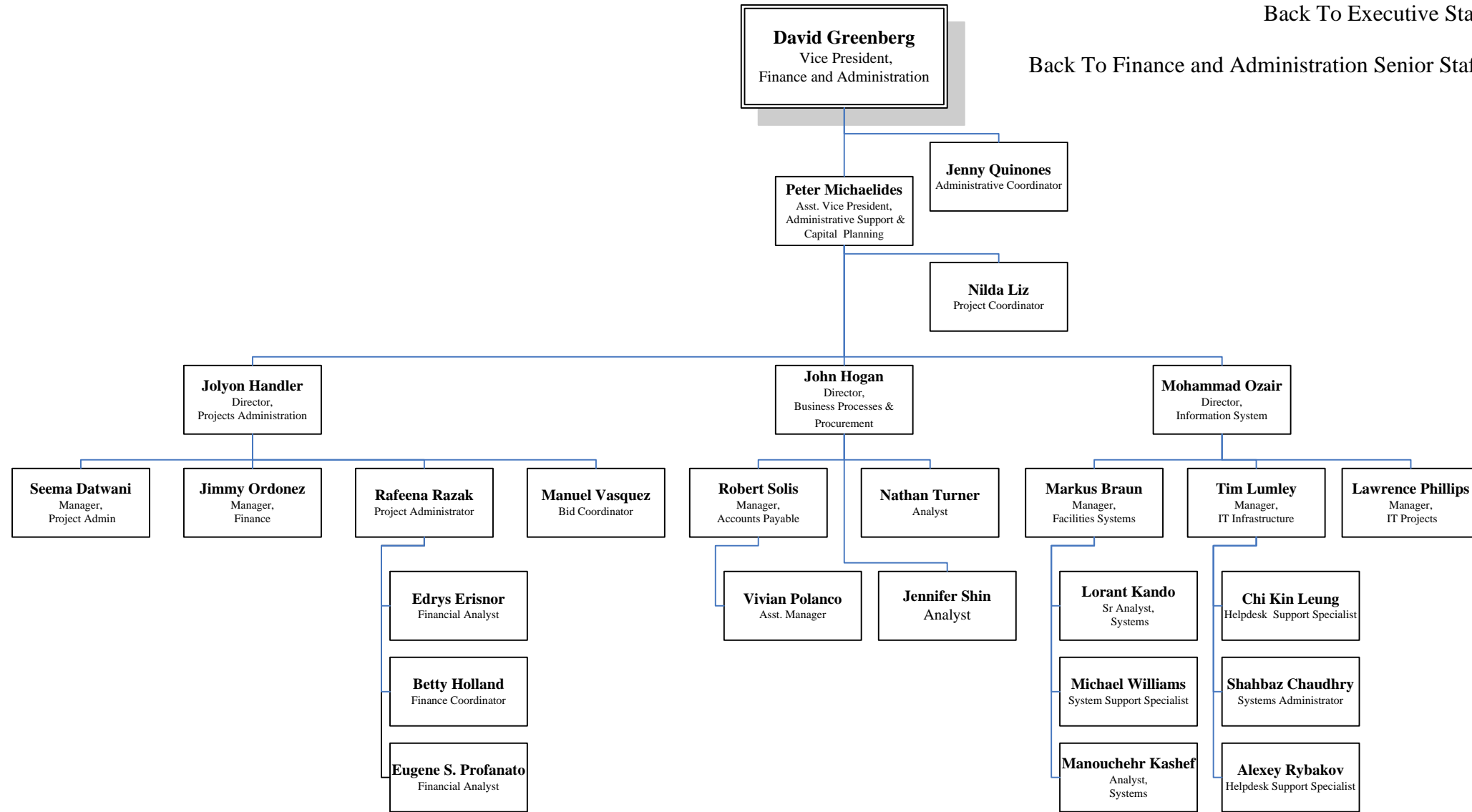
[Back To Finance and Administration Senior Staff](#)



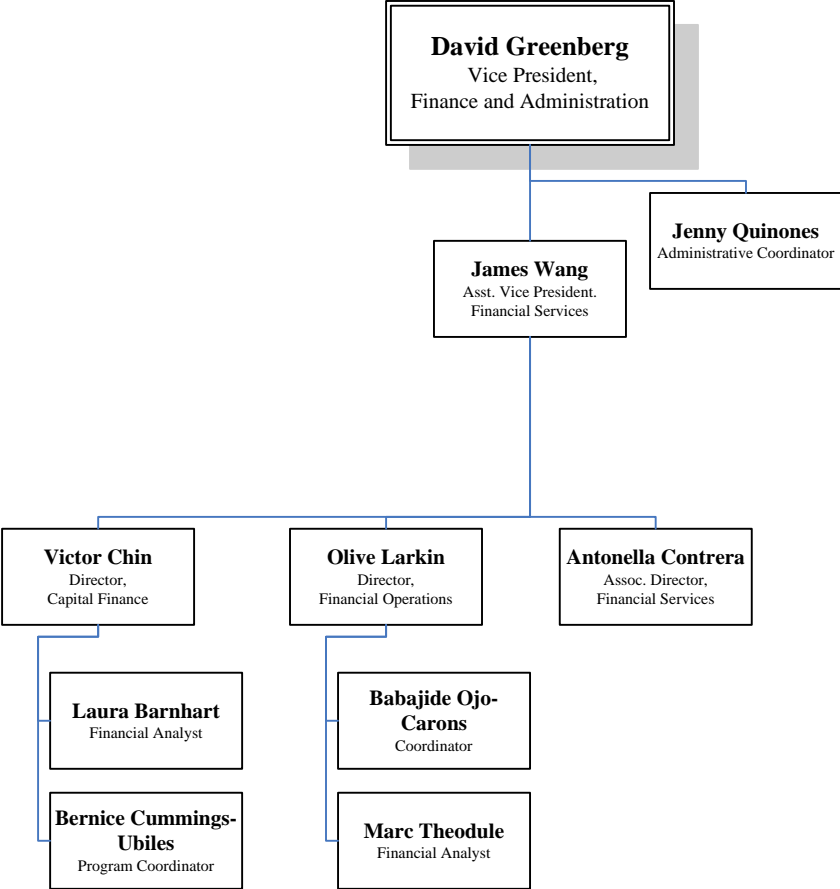
F. &A., Admin Support & Financial Planning

Back To Executive Staff

Back To Finance and Administration Senior Staff



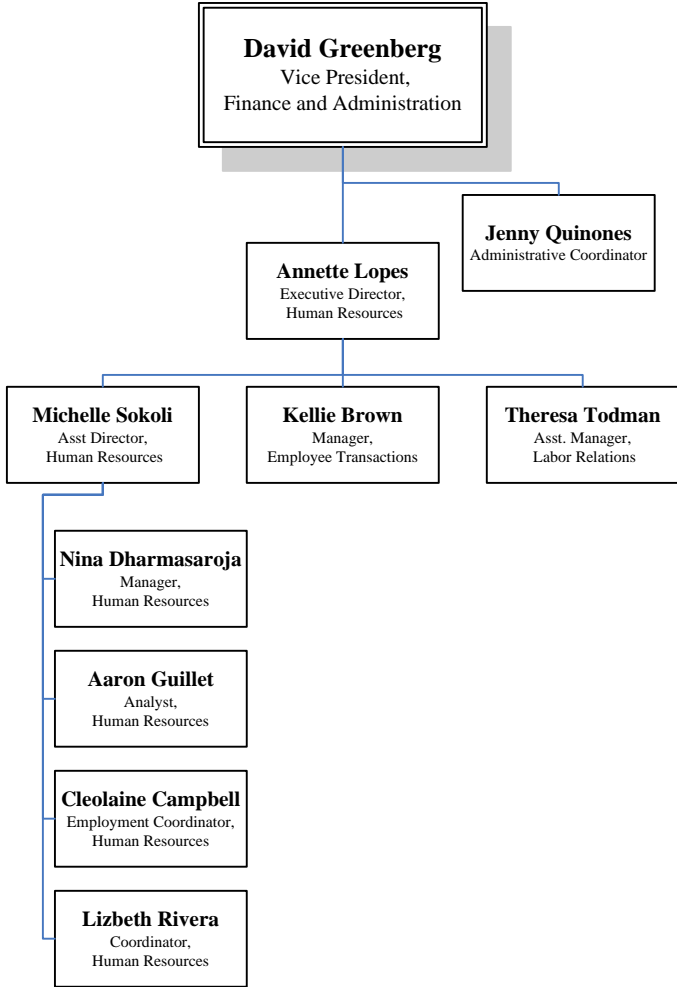
### F. & A., Financial Services



[Back To Executive Staff](#)

[Back To Finance and Administration Senior Staff](#)

### F. & A., Human Resources



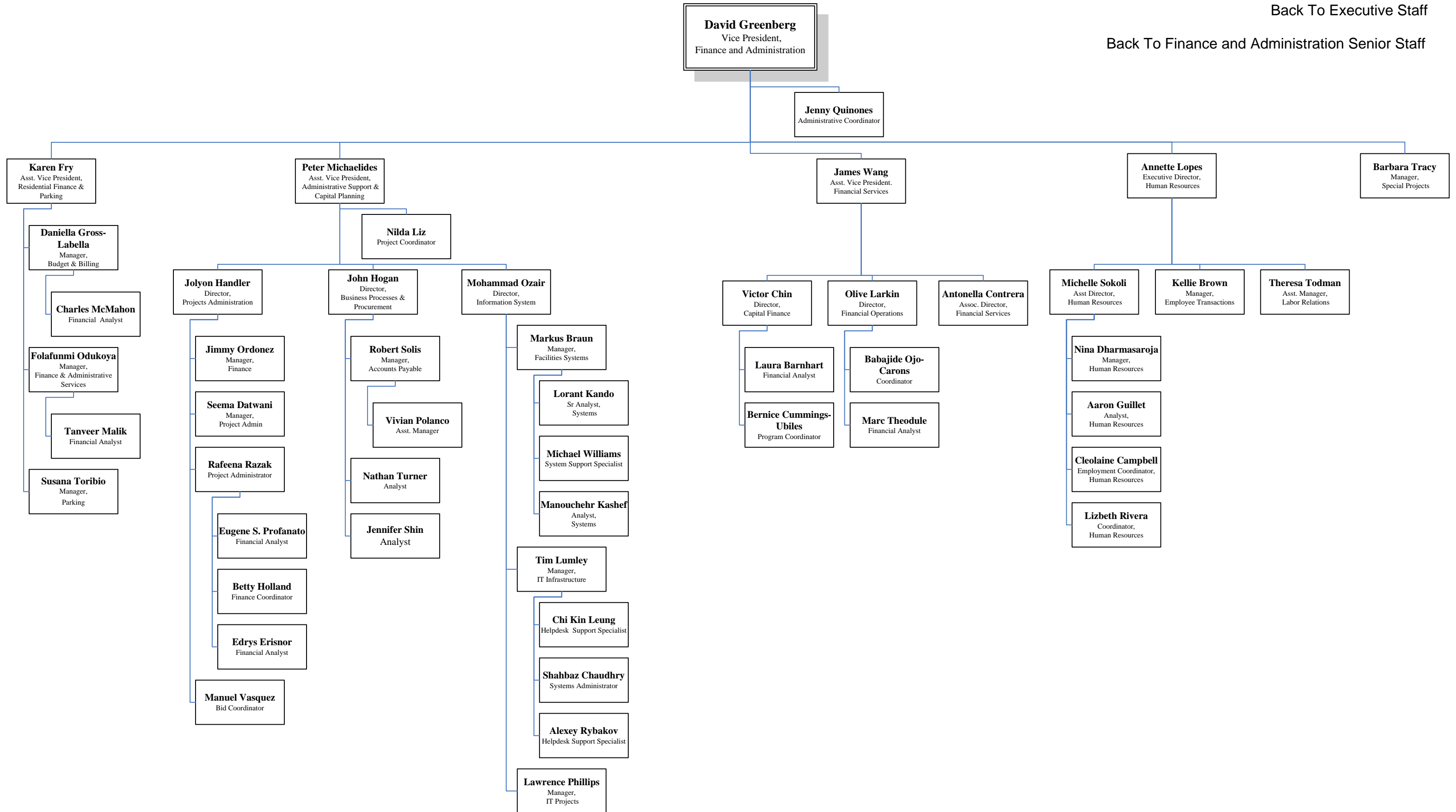
[Back To Executive Staff](#)

[Back To Finance and Administration Senior Staff](#)

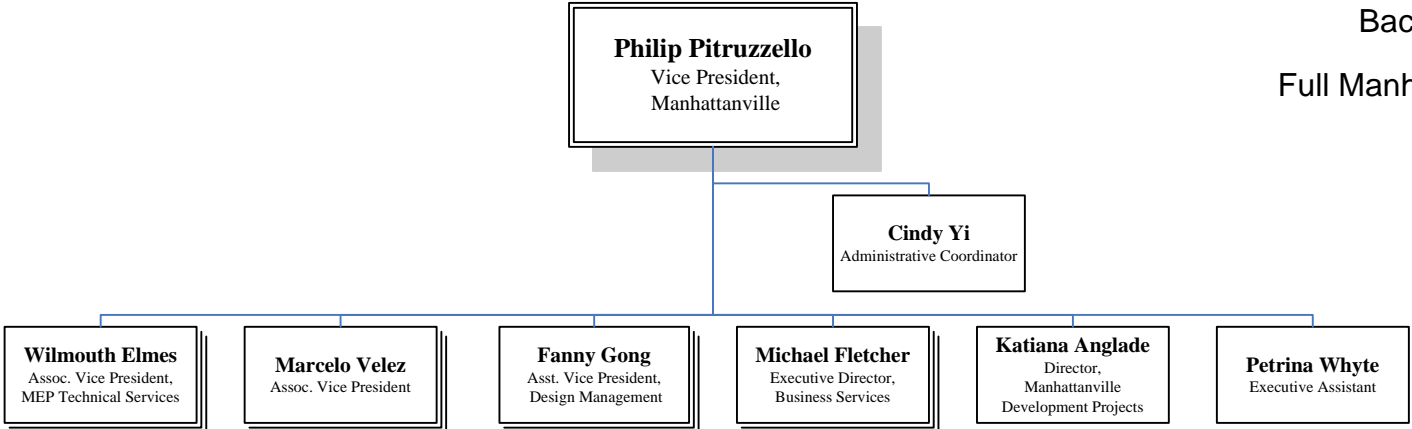
# Finance and Administration

[Back To Executive Staff](#)

[Back To Finance and Administration Senior Staff](#)

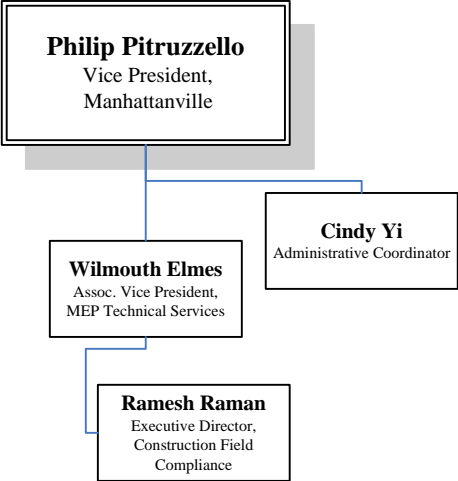


### Manhattanville Senior Staff



[Back To Executive Staff](#)  
[Full Manhattanville Org Chart](#)

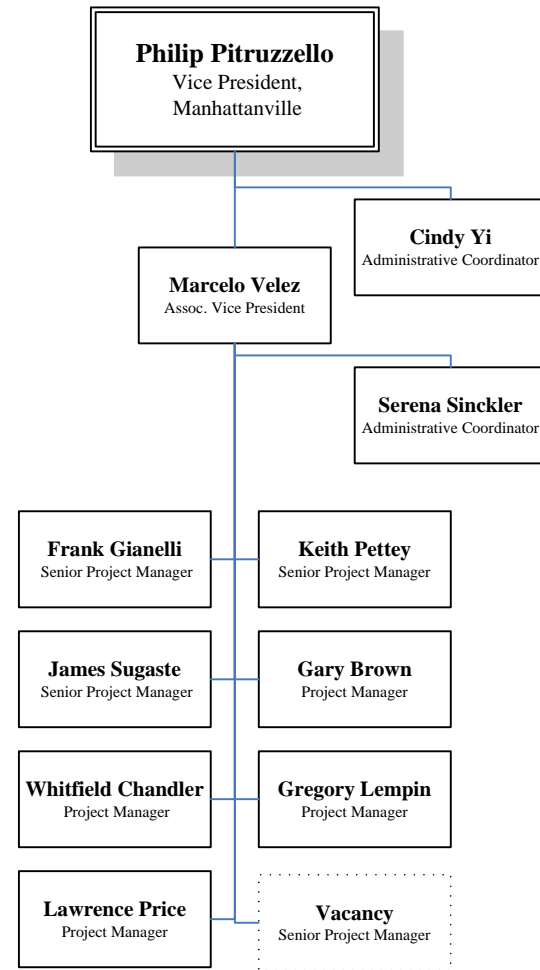
### Mville, Mep Technical Services



Back To Executive Staff

Back To Manhattanville Senior Staff

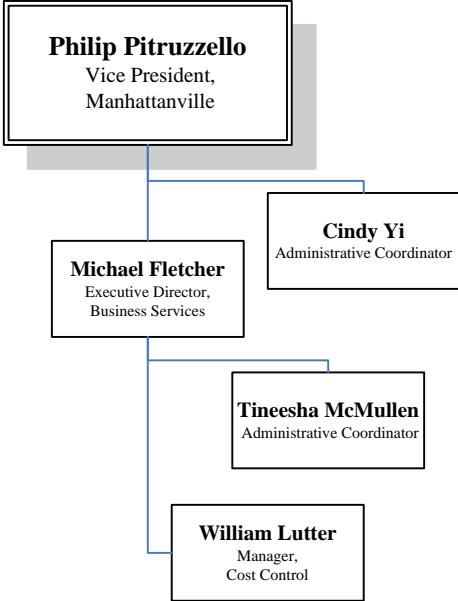
## Mville, Construction



[Back To Executive Staff](#)

[Back To Manhattanville Senior Staff](#)

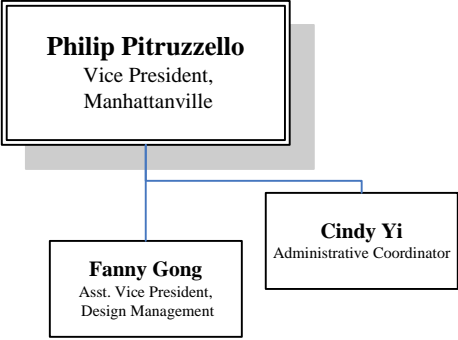
### Mville, Business Services



[Back To Executive Staff](#)

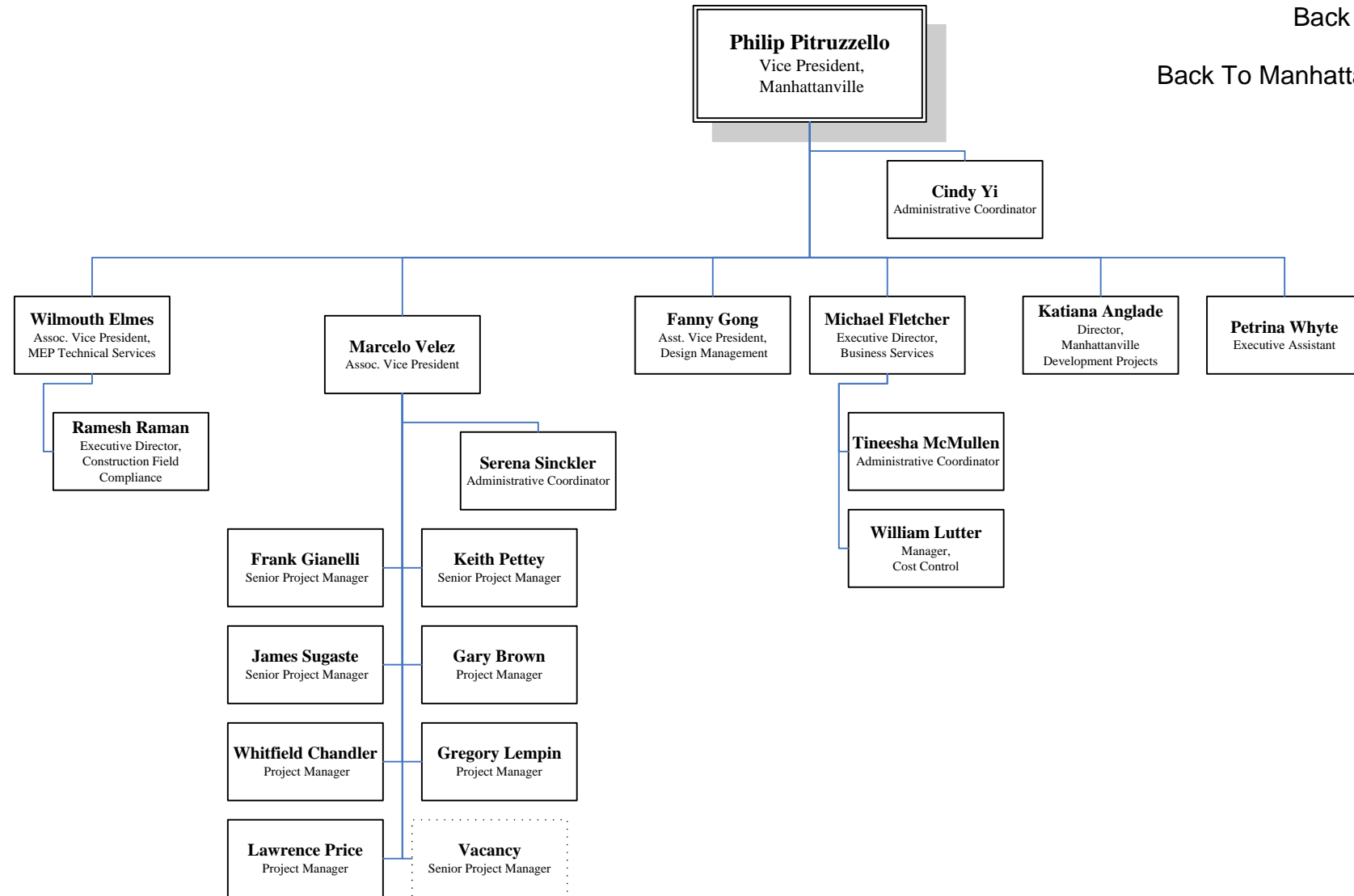
[Back To Manhattanville Senior Staff](#)

### Mville, Design Management



Back To Executive Staff  
Back To Manhattanville Senior Staff

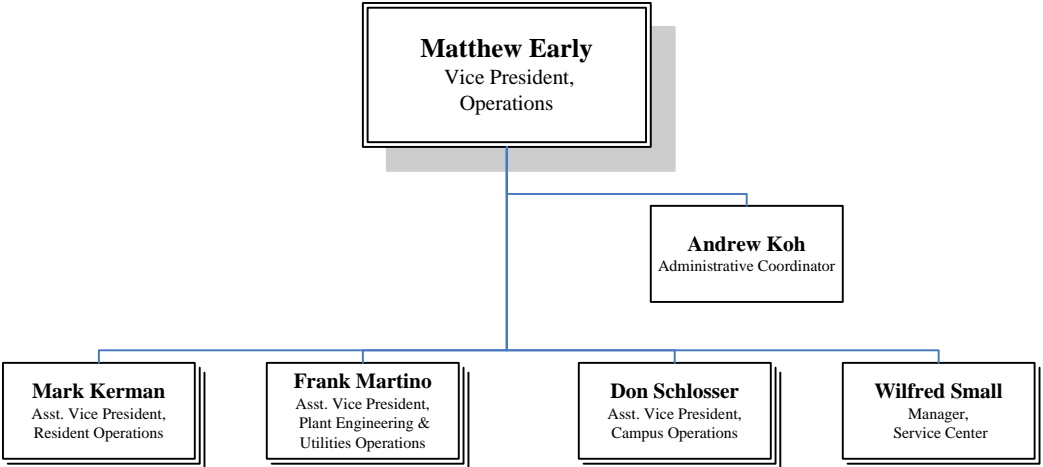
# Manhattanville



[Back To Executive Staff](#)

[Back To Manhattanville Senior Staff](#)

### Operations Senior Staff

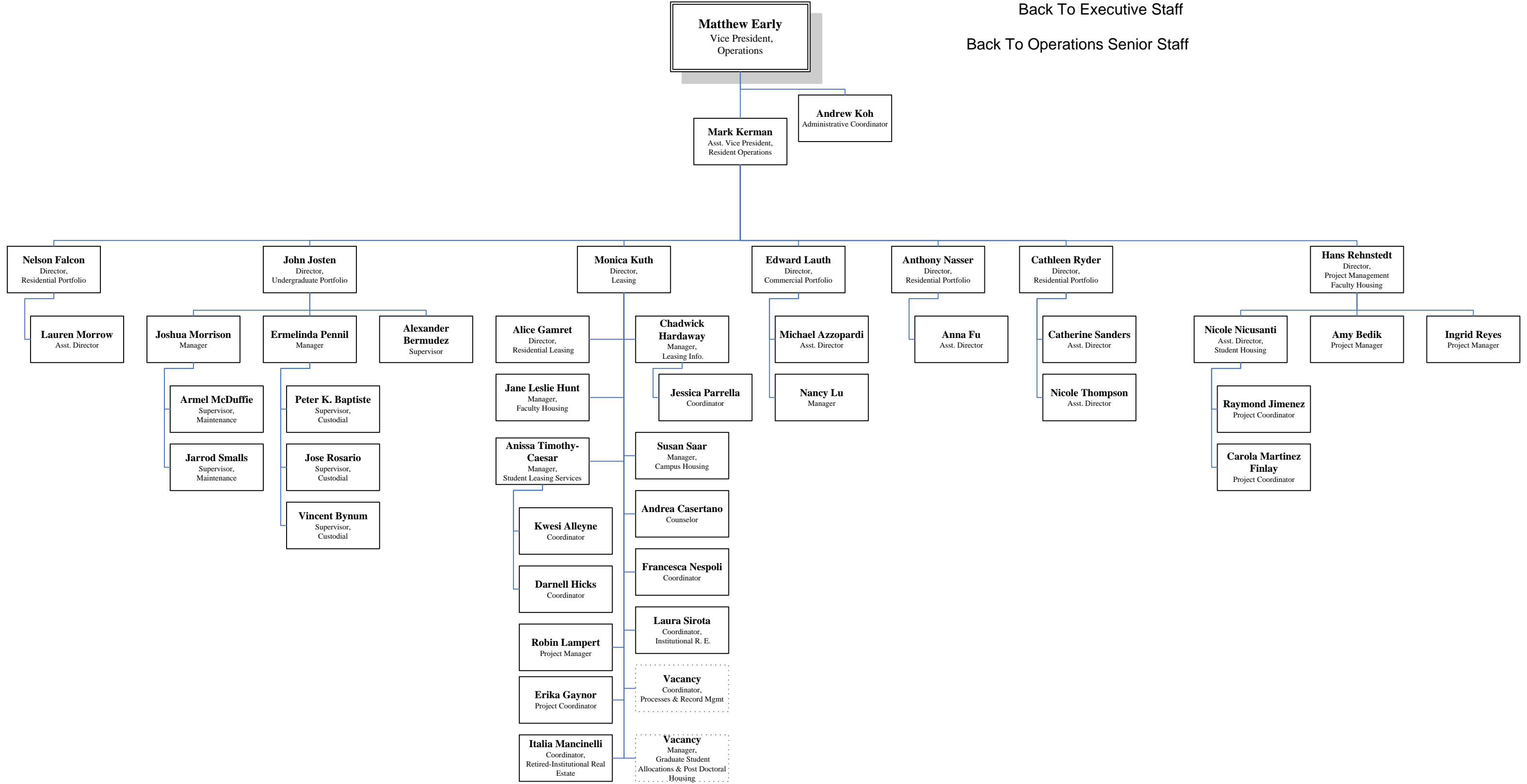


[Back To Executive Staff](#)  
[Full Operations Org Chart](#)

# Ops., Resident Operations

[Back To Executive Staff](#)

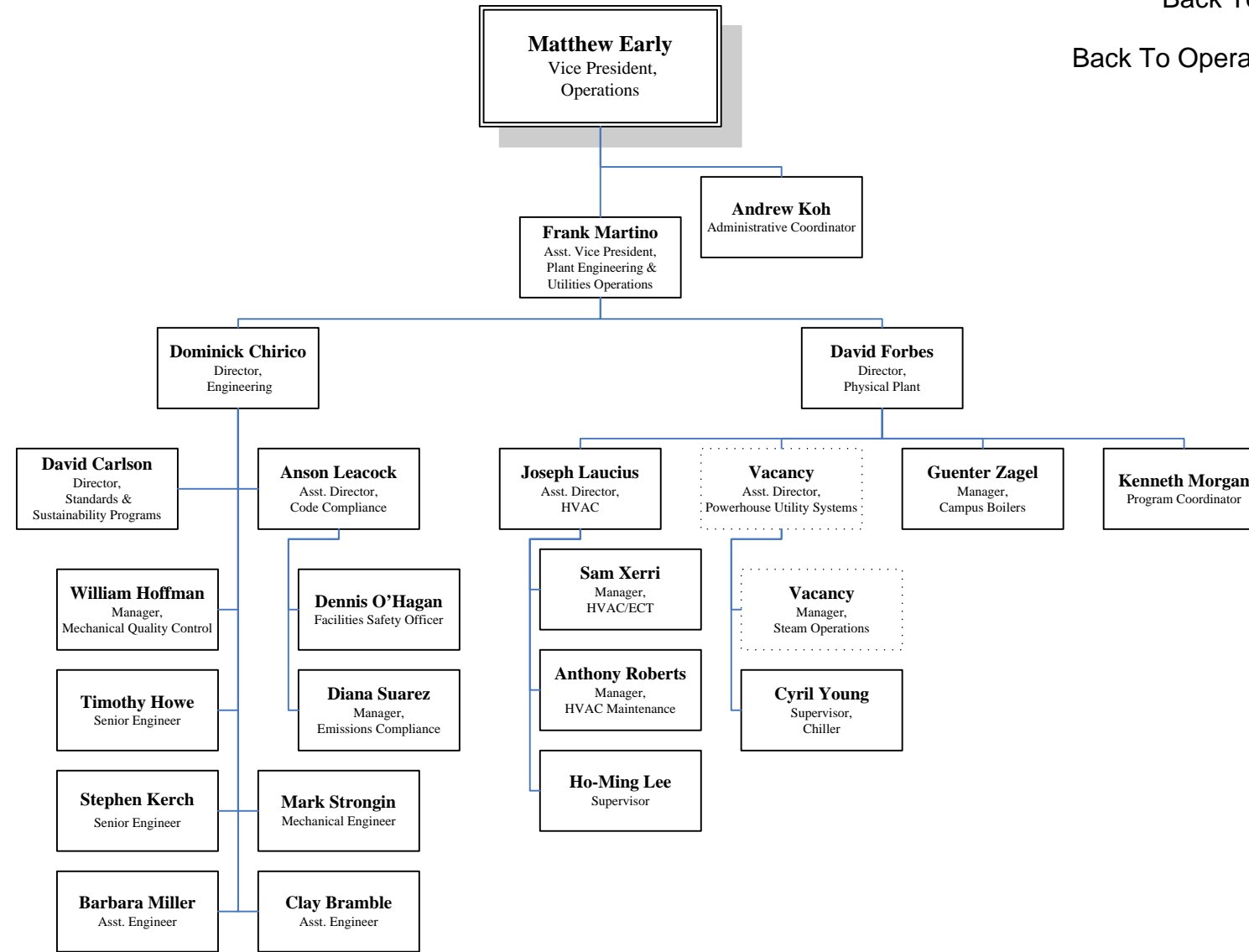
[Back To Operations Senior Staff](#)



## Ops., Plant Engineering & Utilities Operations

[Back To Executive Staff](#)

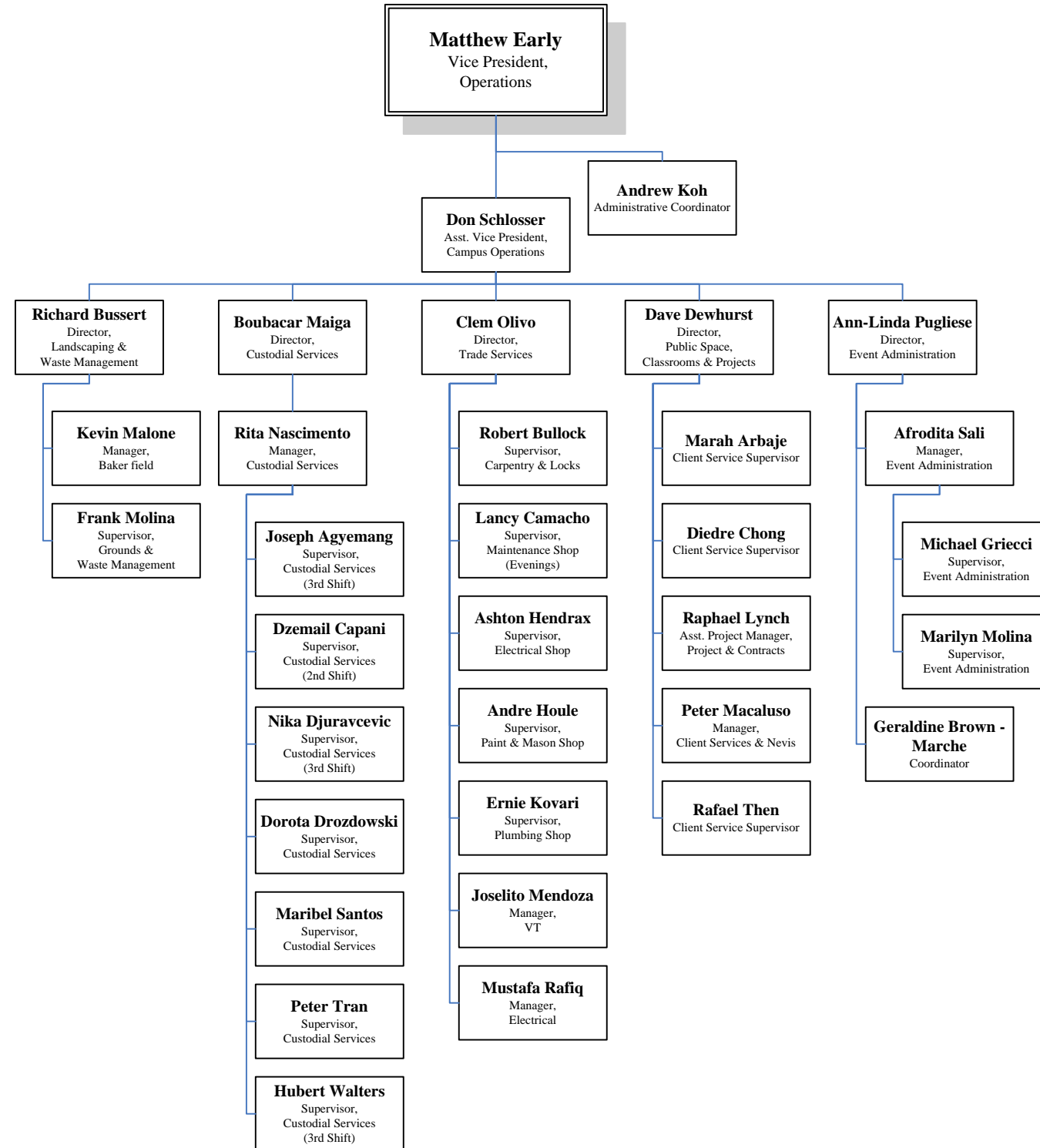
[Back To Operations Senior Staff](#)



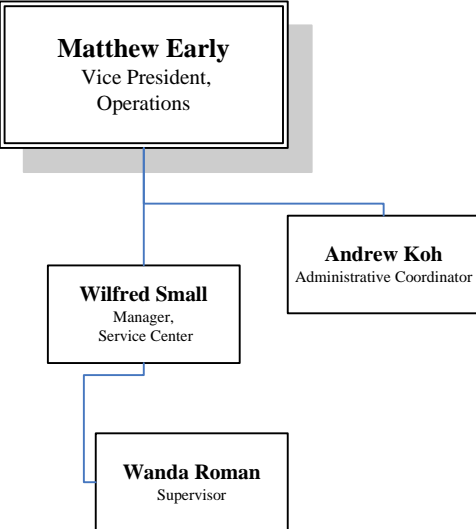
## Ops., Campus Operations

[Back To Executive Staff](#)

[Back To Operations Senior Staff](#)



Ops., Service Center



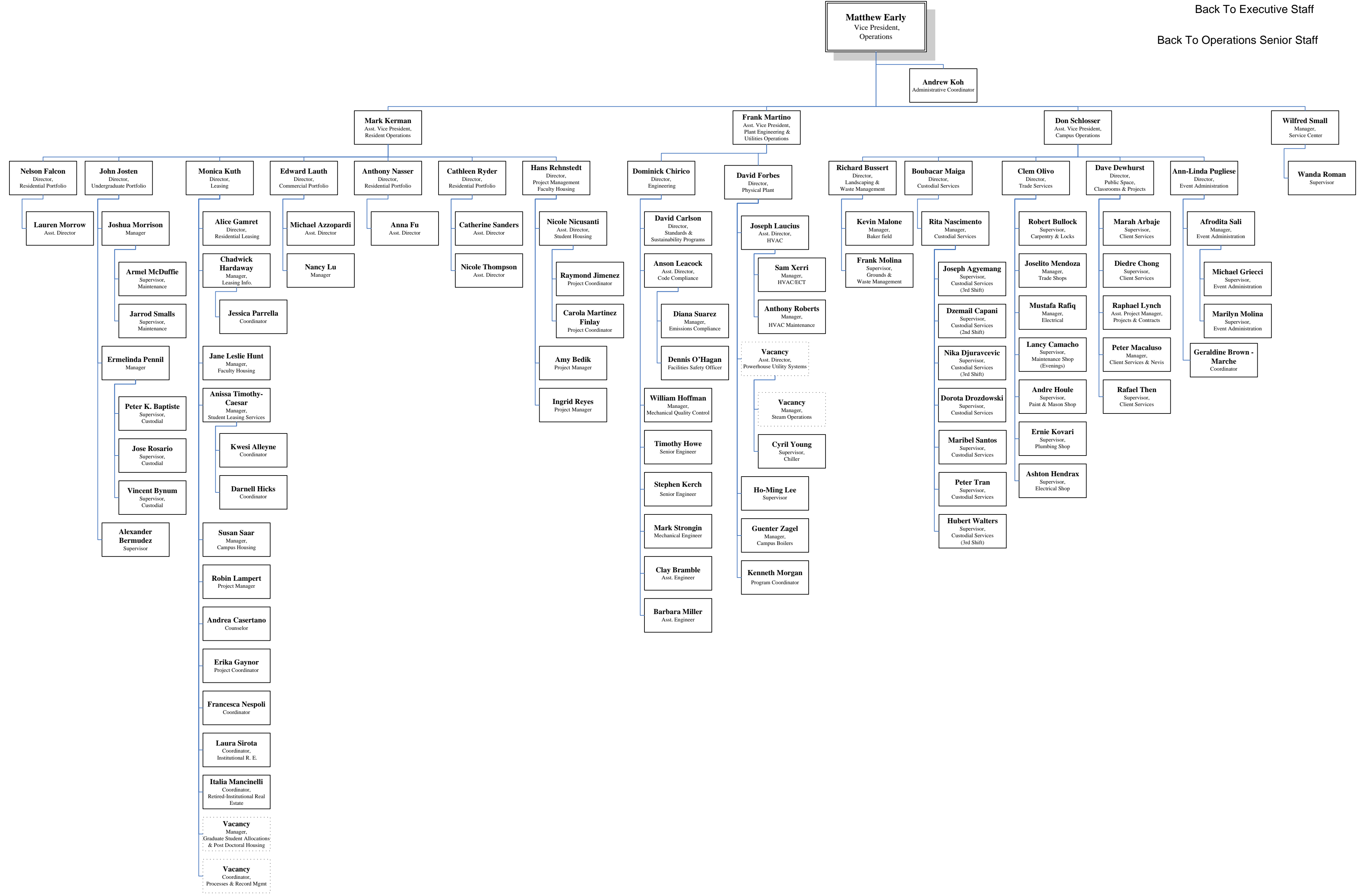
Back To Executive Staff

Back To Operations Senior Staff

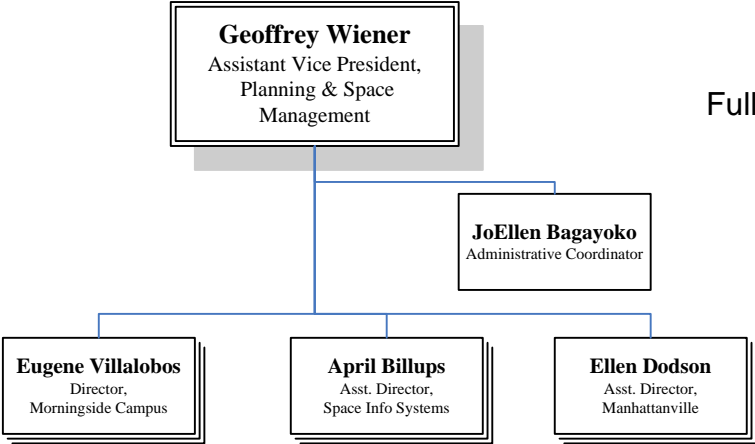
# Columbia University Operations

[Back To Executive Staff](#)

[Back To Operations Senior Staff](#)



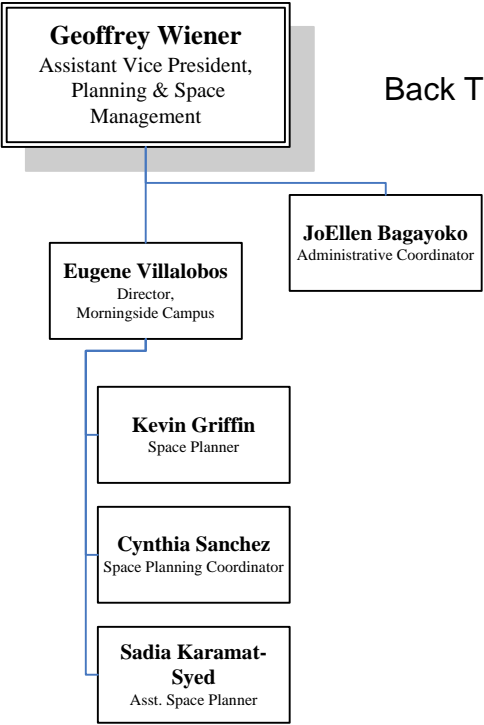
### Planning & Space Management Senior Staff



[Back To Executive Staff](#)

[Full Planning & Space Management Org Chart](#)

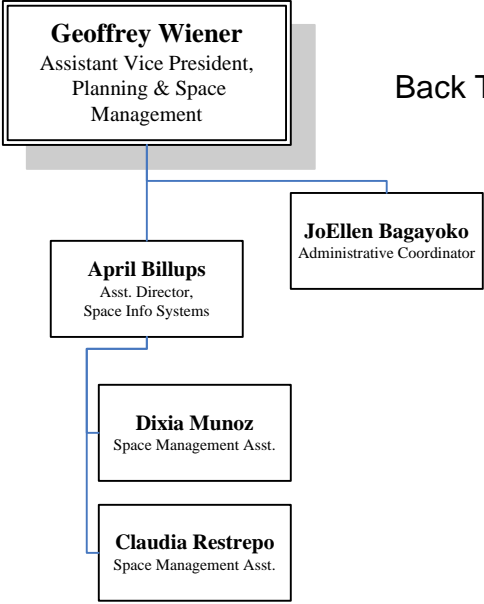
P. & S. Mgmt., Morningside Campus



[Back To Executive Staff](#)

[Back To Planning & Space Management Senior Staff](#)

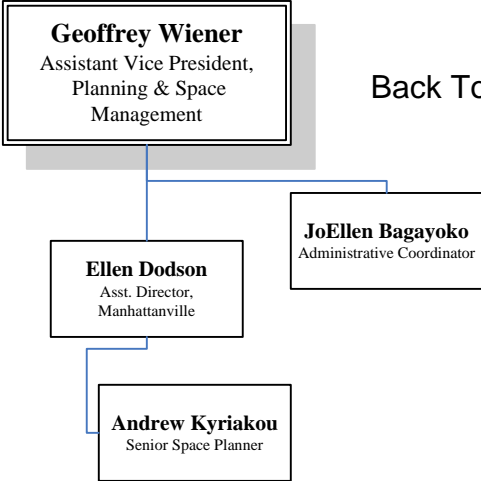
### P. & S. Mgmt., Space Info Systems



Back To Executive Staff

Back To Planning & Space Management Senior Staff

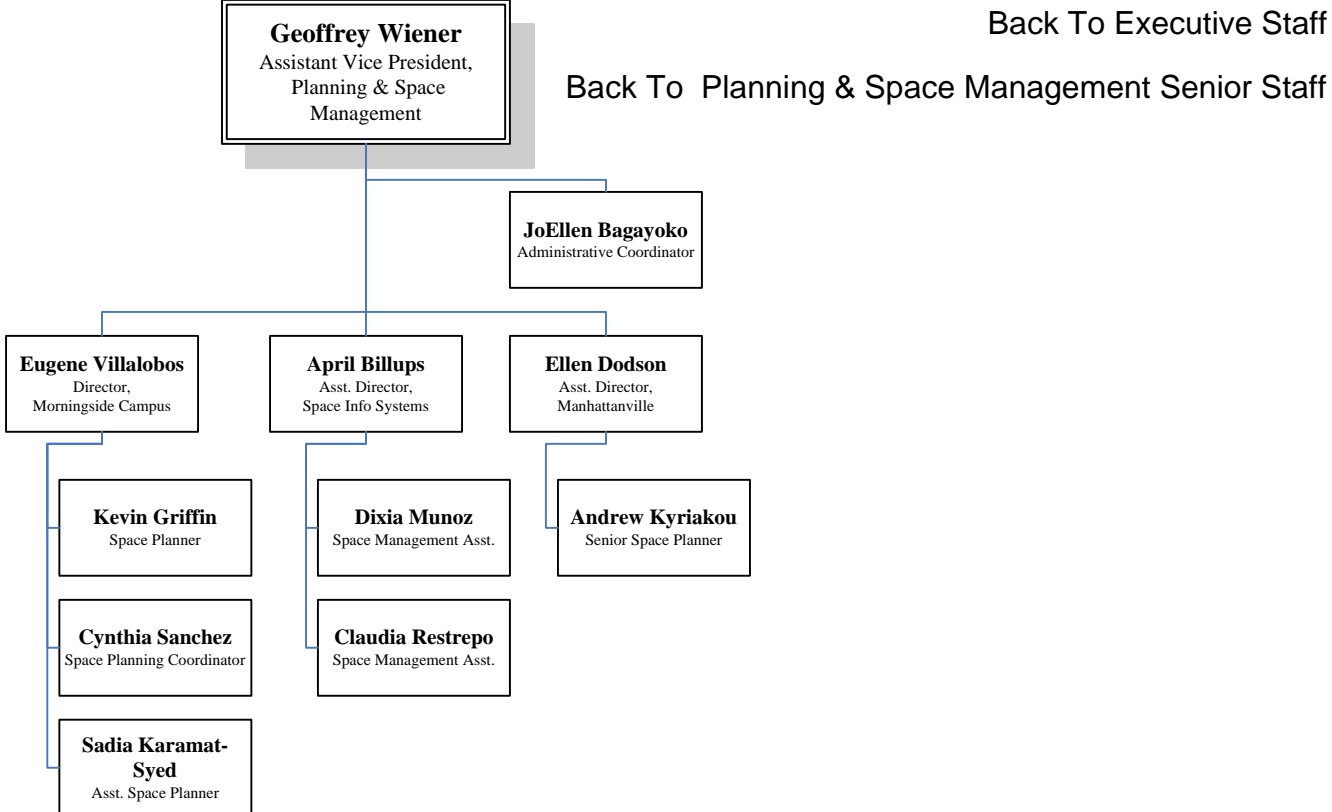
P. & S. Mgmt., Space Planning – Mville.



Back To Executive Staff

Back To Planning & Space Management Senior Staff

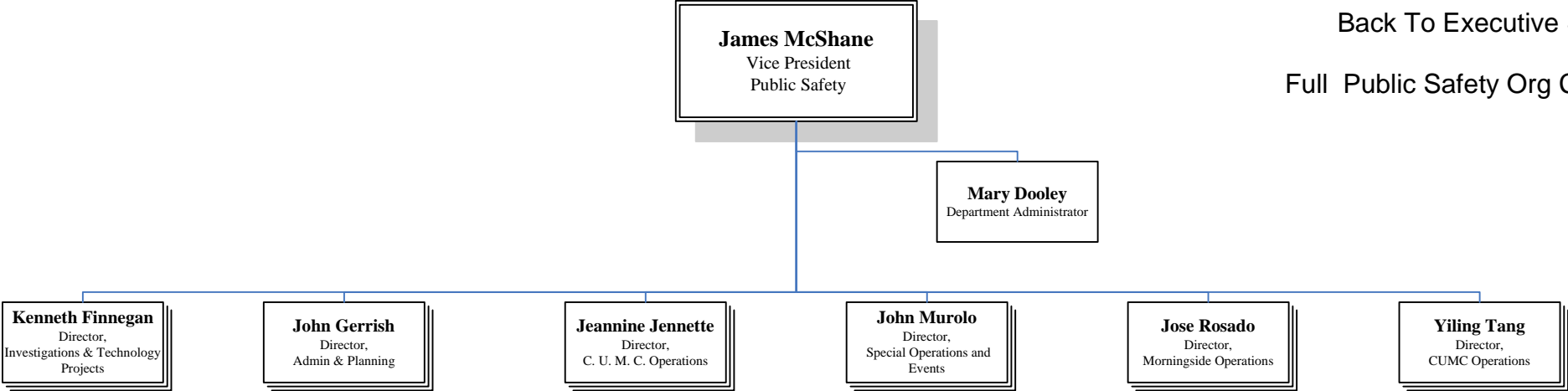
### Planning & Space Management



Back To Executive Staff

Back To Planning & Space Management Senior Staff

### Public Safety Senior Staff

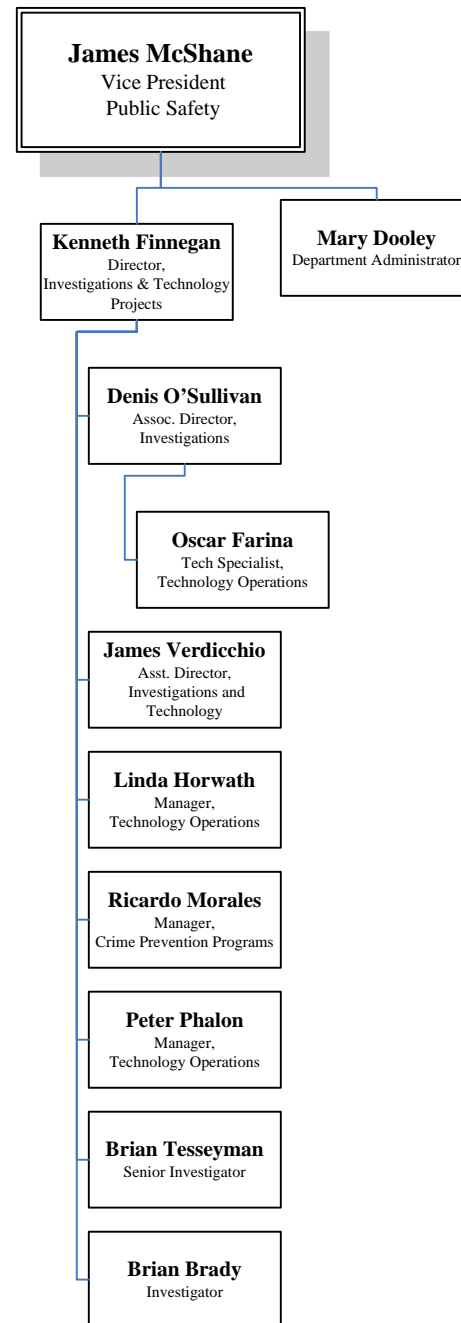


[Back To Executive Staff](#)  
[Full Public Safety Org Chart](#)

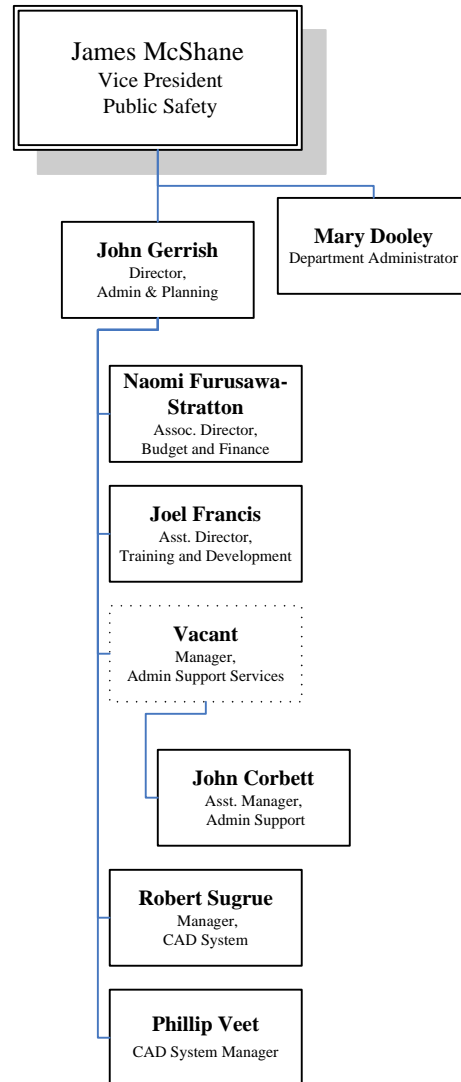
## P. S., Investigations & Technology Projects

[Back To Executive Staff](#)

[Back To Public Safety Senior Staff](#)



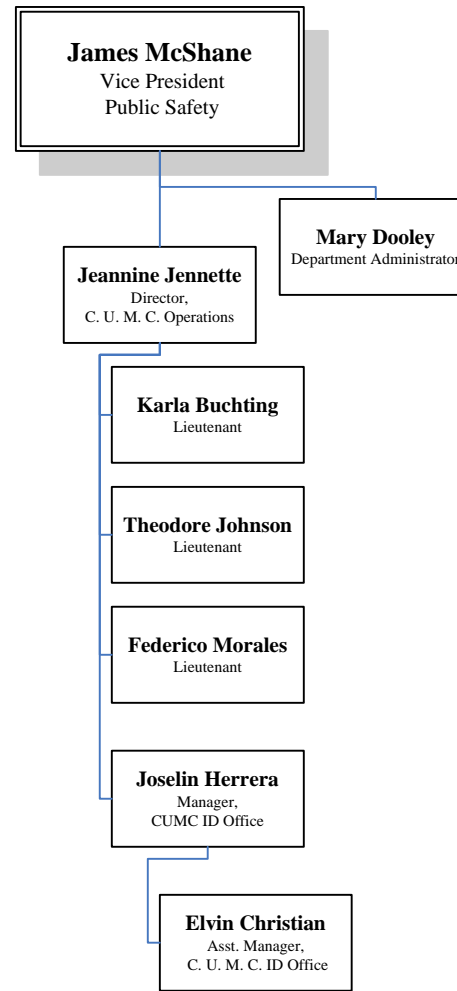
## P. S., Admin & Planning



[Back To Executive Staff](#)

[Back To Public Safety Senior Staff](#)

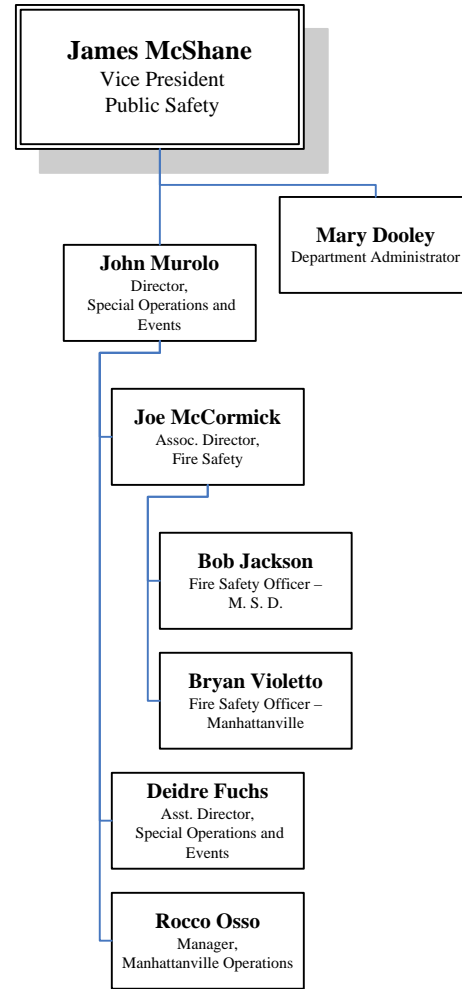
### P. S., C. U. M. C. Operations



[Back To Executive Staff](#)

[Back To Public Safety Senior Staff](#)

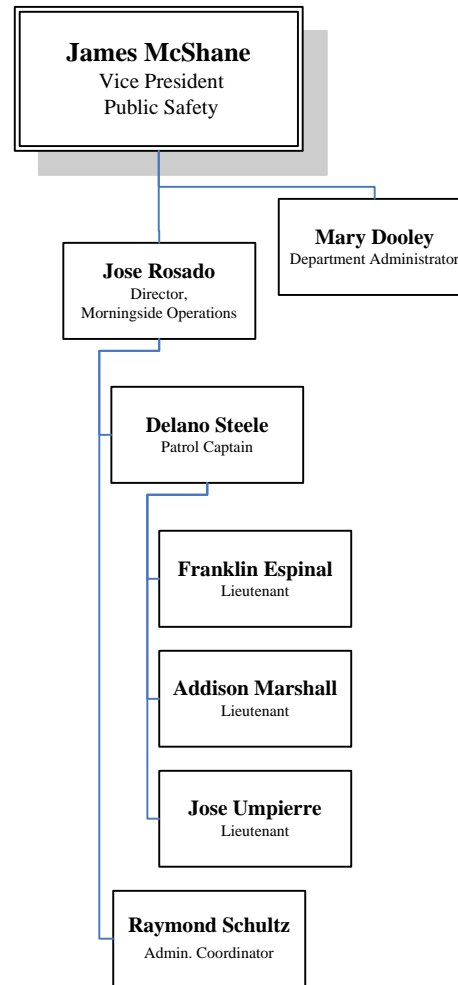
## P. S., Special Operations and Events



[Back To Executive Staff](#)

[Back To Public Safety Senior Staff](#)

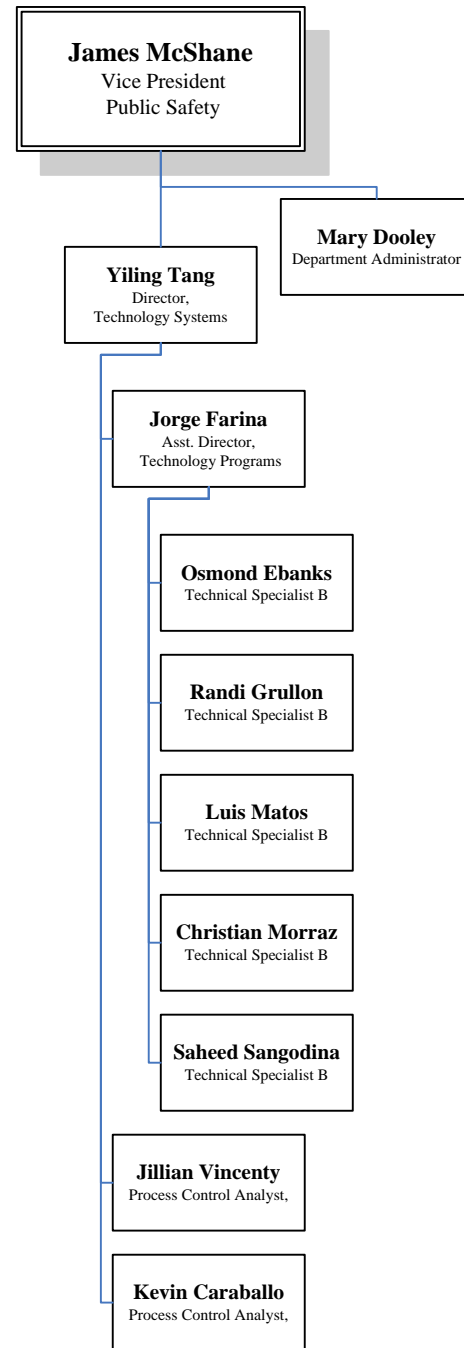
## P. S., Morningside Operations



[Back To Executive Staff](#)

[Back To Public Safety Senior Staff](#)

## P. S., Technology Programs



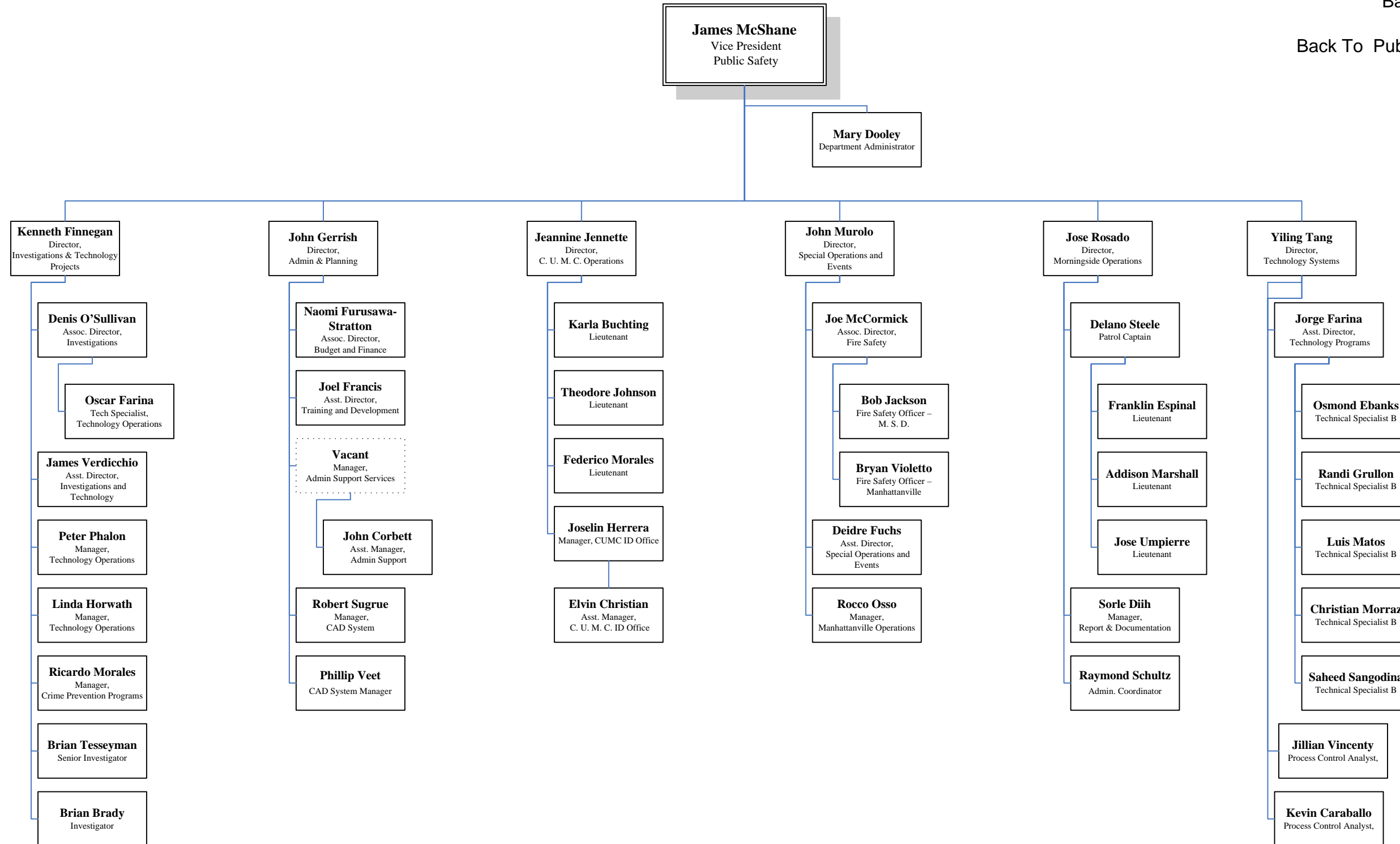
[Back To Executive Staff](#)

[Back To Public Safety Senior Staff](#)

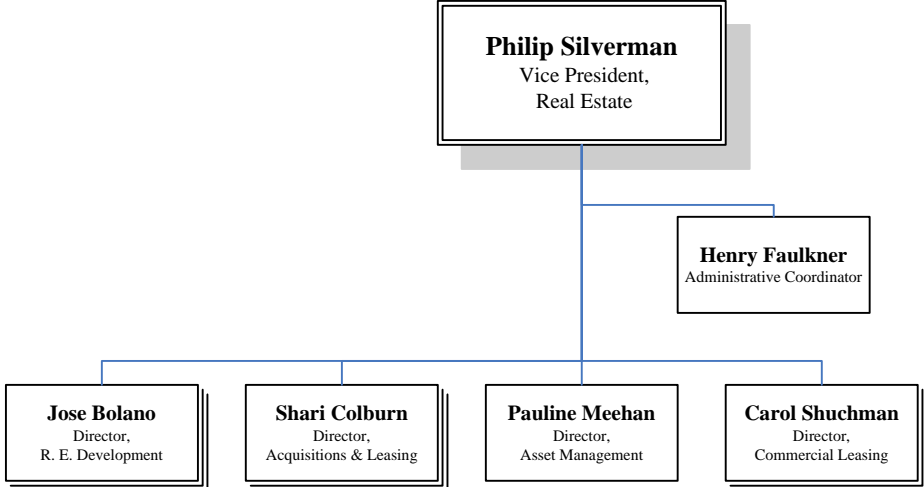
# Public Safety

[Back To Executive Staff](#)

[Back To Public Safety Senior Staff](#)



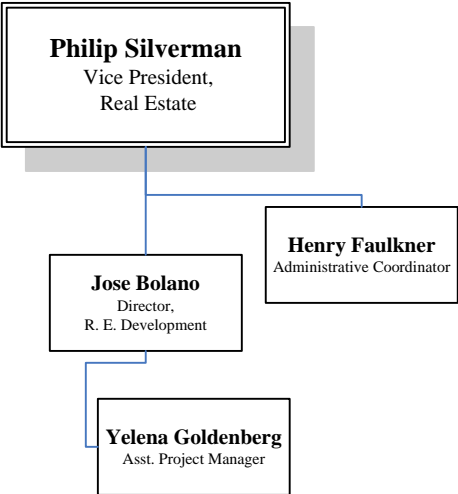
### Real Estate Senior Staff



[Back To Executive Staff](#)

[Full Real Estate Org Chart](#)

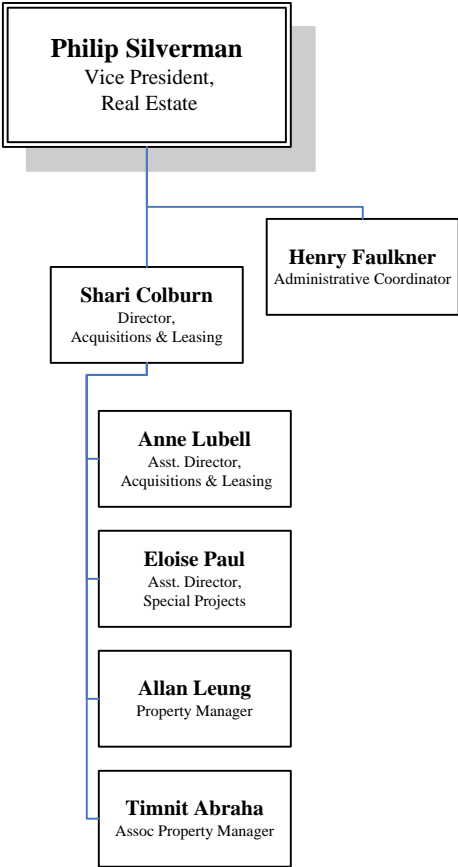
### R. E., Development



[Back To Executive Staff](#)

[Back To Real Estate Senior Staff](#)

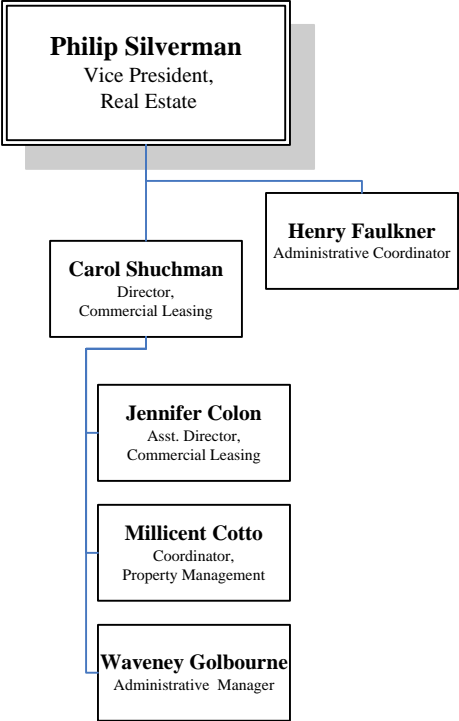
### R. E., Acquisitions & Leasing



[Back To Executive Staff](#)

[Back To Real Estate Senior Staff](#)

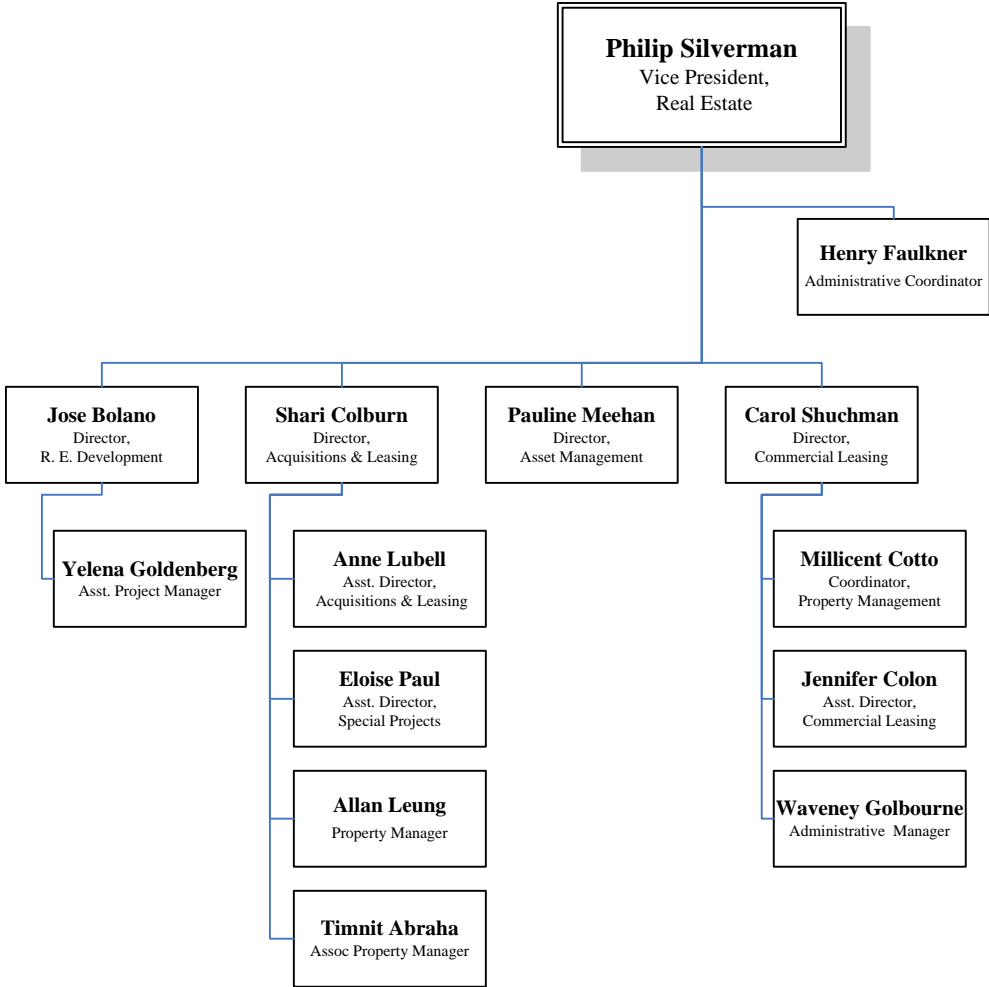
### R. E., Commercial Leasing



[Back To Executive Staff](#)

[Back To Real Estate Senior Staff](#)

### Real Estate



[Back To Executive Staff](#)

[Back To Real Estate Senior Staff](#)