

Northwest Corner Building Orientation Meeting # 3

October 29, 2010



plan. design. build. operate. secure.

Agenda

1. Occupancy Date
2. Building Status
3. Relocation
4. Building Access Procedures
5. Contract Work vs. Day 2 Work
6. Post Relocation

Occupancy Date

- Lab Floors/Library/Lecture Hall
 - Ready for occupancy on November 29, 2010
- Staged/Schedule Moves
- Library and Lecture Hall
 - Operational in January 2011
- Gymnasium entry from 120th Street
 - Operational on November 29, 2010

Building Status

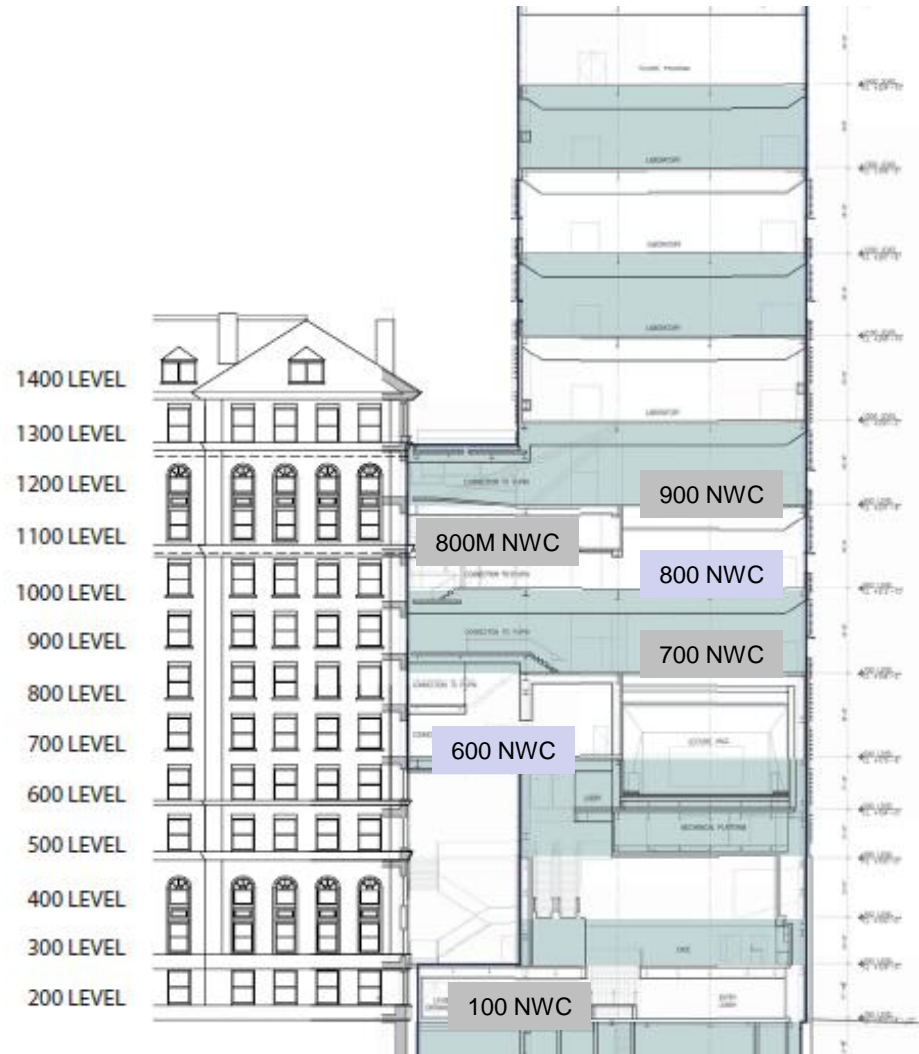
What won't be completed on November 29, 2010

- 13th floor will still be in construction
- 11th floor is a shelled space
- 10th floor construction starting January 1, 2011
- Bridge connections to Pupin and Chandler in progress
- Minor construction activity continuing in 3 labs
 - (9th floor center, 8th floor north)

Pupin Connections

12 Floor Pupin	>> 900 NWC
11 Floor Pupin	>> 800M NWC
10 Floor Pupin	>> (800 NWC)
9 Floor Pupin	>> 700 NWC
8 Floor Pupin	>> 700 NWC
7 Floor Pupin	>> (600 NWC)
2 Floor Pupin	>> 100 NMW

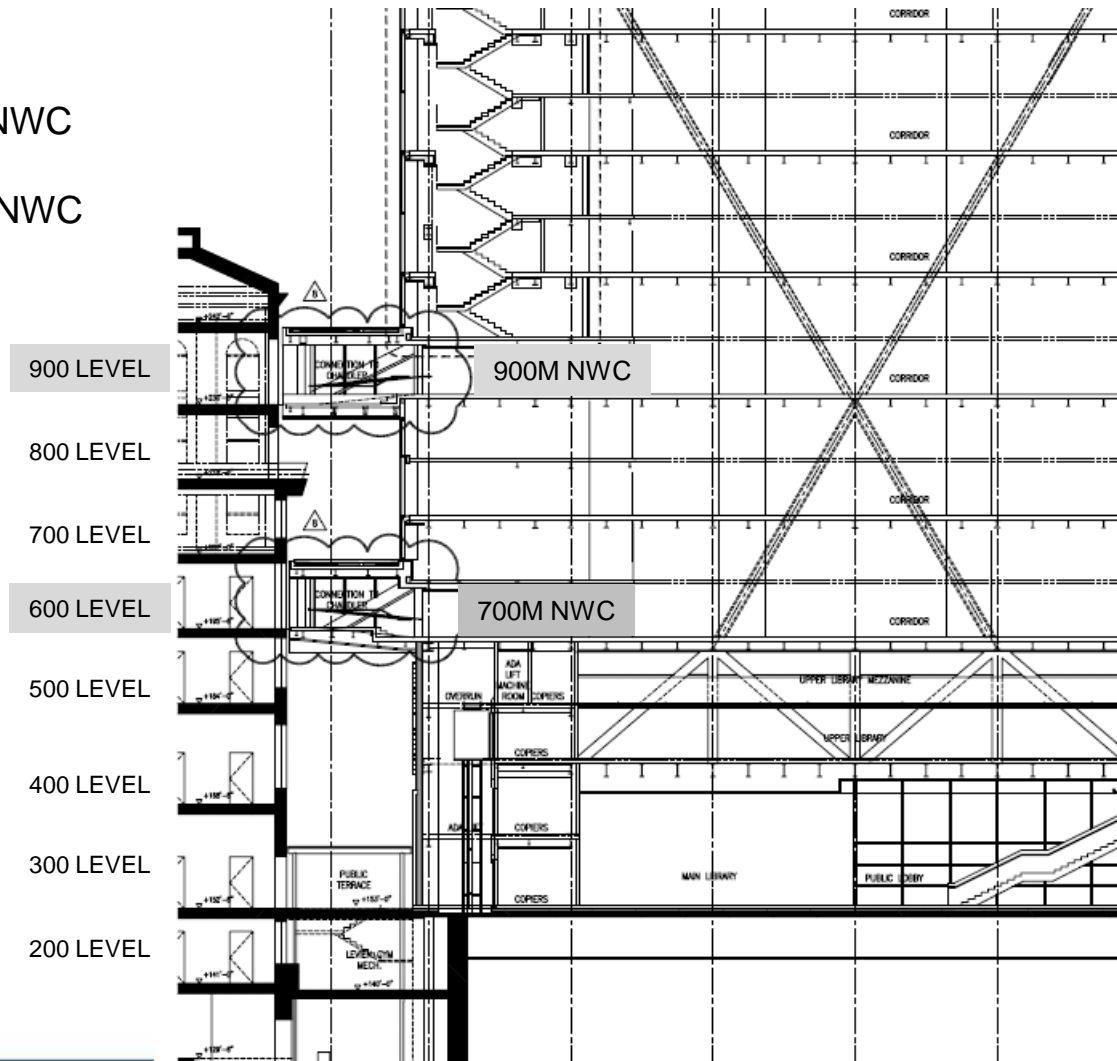
**No Connections on Day One to
(800 NWC)
(600 NWC)**



Chandler Connections

9 Floor Chandler > 900 NWC

6 Floor Chandler > 700 NWC



Relocation - Overview

Relocation Process

- CUF is coordinating the relocation process
- EHS decommissioning existing labs
- Researcher equipment – case by case basis
- Purge / Pack / Labeling / Telephone / Computers / Keys / Checklist
- Relocation instruction summary will be made available on CUF website

- Relocation costs covered by the project

Relocation - Overview

	29-Nov-10	30-Nov-10	1-Dec-10	2-Dec-10	3-Dec-10	4-Dec-10	5-Dec-10	6-Dec-10	7-Dec-10	8-Dec-10	9-Dec-10	10-Dec-10	11-Dec-10	12-Dec-10	13-Dec-10	14-Dec-10	15-Dec-10	16-Dec-10	17-Dec-10
	M	T	W	T	F	S	S	M	T	W	T	F	S	S	M	T	W	T	F
Shepard	CHEM	CHEM	EQUIP	EQUIP	OFFICE														
Hone	CHEM	CHEM	EQUIP	EQUIP	OFFICE														
Kim	CHEM	CHEM	EQUIP	EQUIP	EQUIP			OFFICE											
Fernandez			CHEM	CHEM	EQUIP			EQUIP	EQUIP	OFFICE									
Yuste			CHEM	CHEM	EQUIP			EQUIP	EQUIP	OFFICE									
Venkataraman												CHEM			EQUIP	EQUIP/	OFFICE		

	10-Jan-10	11-Jan-10	12-Jan-10	13-Jan-10	14-Jan-10	15-Jan-10	16-Jan-10	17-Jan-10	18-Jan-10	19-Jan-10	20-Jan-10	21-Jan-10	22-Jan-10	23-Jan-10	24-Jan-10	25-Jan-10	26-Jan-10	27-Jan-10	28-Jan-10
	M	T	W	T	F	S	S	M	T	W	T	F	S	S	M	T	W	T	F
Cornish	CHEM	CHEM	CHEM	EQUIP	EQUIP				EQUIP	EQUIP	OFFICE								
Stockwell			CHEM	CHEM	CHEM				DECON BP-II	PACK/MOVE BP-II	INSTALL BP-II	INSTALL BIOMEK			OFFICE				
				DECON BIOMEK	PACK/MOVE BIOMEK				EQUIP [NOT IN MAIN LAB]	EQUIP [NOT IN MAIN LAB]	EQUIP	EQUIP							

Building Access Procedure

- Building can be accessed as of November 8, 2010
 - After Department of Buildings walkthrough on Nov. 5th
 - Safety / Limited Access / Break Ins
 - Confirmation of contract work
- Procedure for Access
 - Set up Blocks of Time - “Office Hours”
 - Escorted by CPM/CM
 - Contact person is

Building Access Procedure

Schedule of Office Hours

	M 8-Nov-10	T 9-Nov-10	W 10-Nov-10	T 11-Nov-10	F 12-Nov-10
2pm - 2:50pm	Shepard	Fernandez			
3pm-3:50pm	Kim	Venkataraman	Yuste	Stockwell	OPEN MEETING B230
4pm-4:50pm	Hone	Ju	Min	Cornish	

	M 15-Nov-10	T 16-Nov-10	W 17-Nov-10	T 18-Nov-10	F 19-Nov-10
2pm - 2:50pm	Shepard	Fernandez			
3pm-3:50pm	Kim	Venkataraman	Yuste	Stockwell	OPEN MEETING B230
4pm-4:50pm	Hone	Ju	Min	Cornish	

	M 22-Nov-10	T 23-Nov-10	W 24-Nov-10	T 25-Nov-10	F 26-Nov-10
1pm-1:50pm	Shepard	Venkataraman		T-DAY	T-DAY
2pm - 2:50pm	Kim	Ju			
3pm-3:50pm	Hone	Yuste	Stockwell		
4pm-4:50pm	Fernandez	Min	Cornish		

Contract Work vs. Day 2 Work

- Contract Work
 - Within the Project Budget
- Day 2 Work
 - Outside Project Budget
 - Speak with your Department about funding
- Procedure for Changes
 - Establish the Scope of Work
 - Provide Pricing
 - Funding Source from School/Department/Researcher

Post Relocation

Please note that the following will not be completed on Nov. 29, 2010

- 13th floor will still be in construction
- 11th floor is a shelled space
- 10th floor construction starting January 1, 2011
- Bridge connections to Pupin and Chandler in progress
- Minor construction activity continuing in 3 labs
 - (13th floor center, 9th floor center, 8th floor north)

Questions